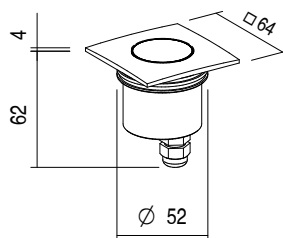
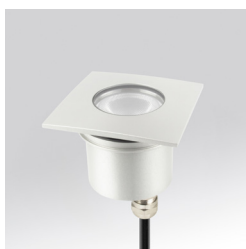


ALTEA MAXI S 230VAC

IP67 IK08 CE F   WP   | A > A+ > A++TIPOLOGIA / *TPOLOGY*Incasso | *Recessed*POSIZIONE INSTALLATIVA | *INSTALLATION POSITION*A terra, a parete | *Floor or wall mounting*AMBIENTE INSTALLATIVO | *INSTALLATION LOCATION*Esterno | *Outdoor*

ALTEA MAXI S 230VAC

6W

Finish .01
kg 0,24Finish .06 .10
kg 0,38

53 mm

ALTEA MAXI S 230VAC

CARATTERISTICHE ELETTRICHE | ELECTRICAL FEATURES

POTENZA ASSORBITA POWER CONSUMPTION	6W
ALIMENTAZIONE POWER SUPPLY	230Vac
ALIMENTATORE POWER SUPPLY UNIT	Integrato (elettronica in 230Vac) Integrated (230Vac electronics)
DIMMERAZIONE DIMMING	Dimmerabile taglio di fase Phase cut dimmable
COLLEGAMENTO CONNECTION	Tensione di rete Mains voltage

CARATTERISTICHE ILLUMINOTECNICHE | LIGHTING FEATURES

COLORE LED LED COLOUR	2700K, 3000K, 4000K		
INDICE RESA CROMATICA CRI CRI	>80		
BINNING	3 step MacAdam 3 MacAdam steps		
OTTICHE OPTICS	20°, 35°, 43°, Diffused, 66°		
FLUSSO TOTALE NOMINALE TOTAL DELIVERED LUMENS	520lm (2700K)	550lm (3000K)	590lm (4000K)
DURATA MEDIA LED AVERAGE LED LIFE	50.000h L80 B10		

CARATTERISTICHE MECCANICHE | MECHANICAL FEATURES

PESO WEIGHT	Finishing .01	Kg 0,24
	Finishing .06 .10	Kg 0,38
FINITURE FINISHES	Alluminio anodizzato, Acciaio, Acciaio Spazzolato Anodized aluminium, Steel, Brushed Steel	
INSTALLAZIONE INSTALLATION	A incasso a terra con cassaforma (non inclusa) Recessed on ground with housing box (not included)	
	A muratura con cassaforma (non inclusa) Recessed on brickwork with housing box (not included)	
	Drenaggio 30 cm di ghiaia (solo per installazione a terra) 30 cm gravel drainage (for floor application only)	
MATERIALE MATERIAL	Corpo in alluminio anticorrosivo anodizzato, ghiera in alluminio anodizzato o in acciaio inox AISI 316L, vetro temperato trasparente Anticorrosive anodized aluminium body, anodized aluminium or AISI 316L stainless steel trim, transparent tempered glass	


CARATTERISTICHE GENERALI | GENERAL FEATURES

TEMPERATURA DI ESERCIZIO OPERATING TEMPERATURE	-10°C +45°C
GRADO DI PROTEZIONE INGRESS PROTECTION	IP67
GRADO DI RESISTENZA IMPACT RESISTANCE	IK08
GLOW WIRE TEST GLOW WIRE TEST	960°C
TEMPERATURA MASSIMA APPARECCHIO MAX. TEMPERATURE OF FIXTURE	50° @ Ta = 25°
CLASSE DI ISOLAMENTO APPLIANCE CLASS	I
CALPESTABILE WALKOVER	Sì / Yes
CARRABILE DRIVE OVER	No
CAVI DI ALIMENTAZIONE POWER CABLES	Fornito con 50 cm di cavo Provided with 50 cm cable
SICUREZZA STANDARD STANDARD SAFETY	WP System
SICUREZZA FOTOBIOLOGICA PHOTOBIOLOGICAL SAFETY	GR1


ALTEA MAXI S 230VAC

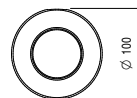
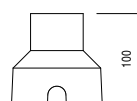
ACCESSORI | ACCESSORIES

a scelta | to be chosen

CODICE / CODE	CAW53
TIPOLOGIA / TYPOLOGY	Cassaforma Housing box  kg 0,10
MATERIALE MATERIAL	PVC

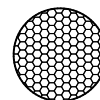


CODICE / CODE	CAI53
TIPOLOGIA / TYPOLOGY	Cassaforma Housing box  kg 0,06
MATERIALE MATERIAL	ABS



a scelta | to be chosen

CODICE / CODE	HC
TIPOLOGIA / TYPOLOGY	Filtro Honeycomb <i>Honeycomb filter</i>
NOTE	<i>with 20°, 35°, 43°, 66° lens only</i>



CODICE / CODE	BC
TIPOLOGIA / TYPOLOGY	Filtro Black & Clear <i>Black & Clear filter</i>
NOTE	<i>with 20°, 35°, 43°, 66° lens only</i>



CODICE / CODE	BD
TIPOLOGIA / TYPOLOGY	Filtro Black & Diffused <i>Black & Diffused filter</i>
NOTE	<i>with diffused lens only</i>

